



SKI TIME SQUARE BUILDING



THE ALPENGLOW

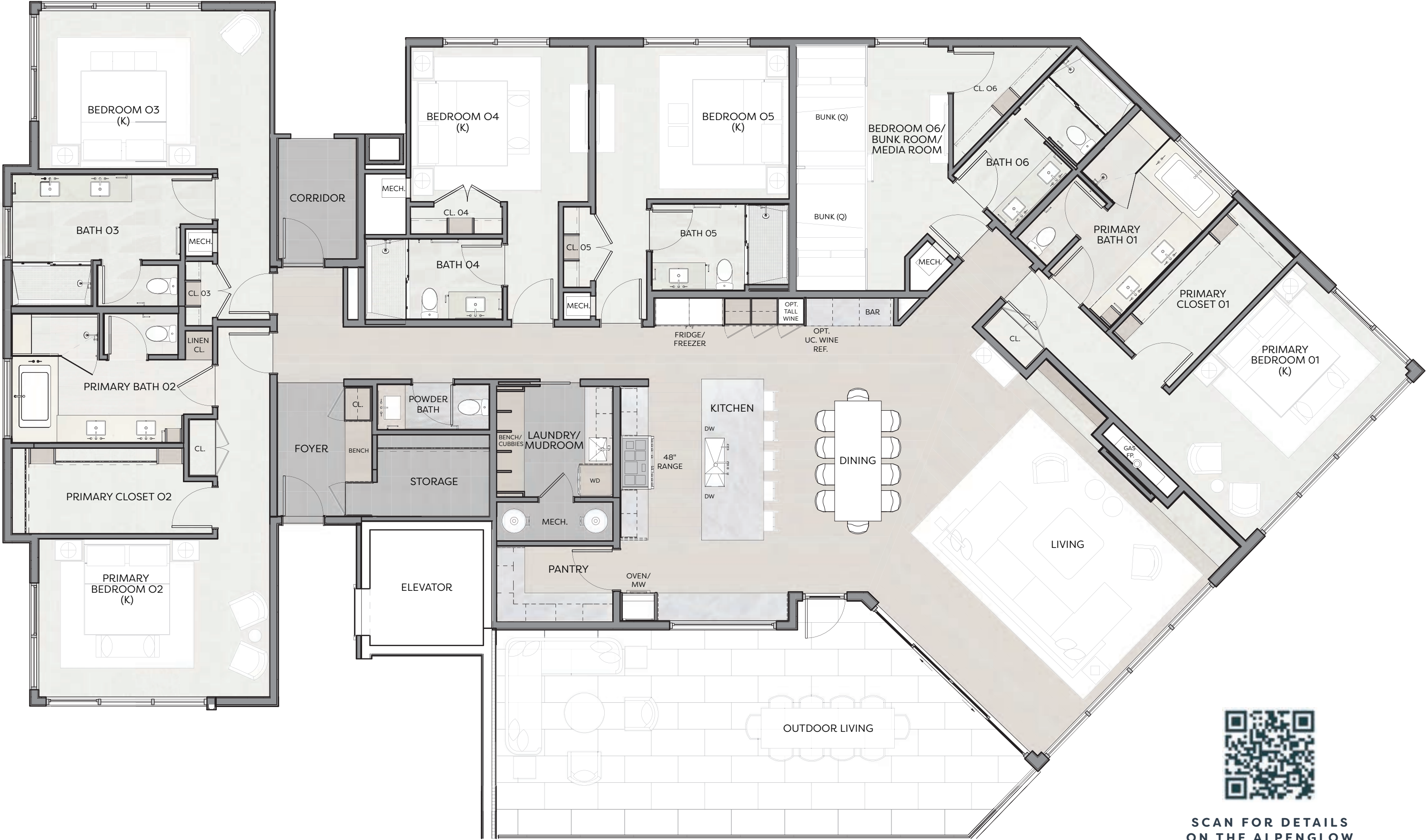
PENTHOUSE 500



THE ALPENGLOW

6 BD | 6.5 BA | 3,945
SQUARE FEET

- AWE-INSPIRING VIEWS, from alpenglow skies and mountain peaks to the quiet garden below
- VAULTED CEILINGS AND FLOOR-TO-CEILING WINDOWS welcome an abundance of natural light and panoramic alpine vistas
- SINGLE-LEVEL LIVING, direct-to-residence elevator providing private access
- EXPANSIVE GREAT ROOM with gas fireplace, designed for gatherings large and small
- CHEF'S KITCHEN WITH WALK-IN PANTRY, abundant storage, island seating for five, and 48" Wolf® range
- TWO PRIMARY BEDROOM SUITES, with walk-in closets, and 5-fixture bath with soaking tub
- FLEXIBLE BONUS ROOM easily adapts as a bunkroom, media space, or private office
- LARGE TERRACE offers seamless indoor/outdoor living with mountain and garden views
- RESIDENTIAL FEATURES including spacious entry foyer, dedicated laundry and mudroom with built-in storage, powder room, en suite bathrooms, and on-site ski/snowboard and bike storage
- DEDICATED PARKING in a private, heated parking garage with available EV hookups



SCAN FOR DETAILS
ON THE ALPENGLOW

All floor plans are approximate and subject to change without notice. Dimensions, layouts, square footage, and features may vary.



ADVENTURE IS ALWAYS WITHIN REACH.
AND CALM IS NEVER FAR AWAY.



Eastern View of Steamboat Ski Resort



INQUIRE TO LEARN MORE.



INFO@1700STEAMBOAT.COM

1700STEAMBOAT.COM

970.236.1890

All depictions shown herein are artist conceptual renderings and drawings intended solely for illustrative purposes. They may not accurately represent the details of these specific residences and do not constitute an agreement or commitment on the part of the Seller to deliver these residences in accordance with such illustrations. The orientation, views, window configurations, features, ceiling heights and design elements vary from home to home. Interested buyers are advised to inspect the plans and specifications and to consult the terms of the Purchase and Sale Agreement for the design details and other information important to the purchase of each specific home.